

# Southline Steel Industries

painting coil | coil processing | steel framing

## Steel Framing Product Catalog



**Southline Steel Framing Operations**



*Warehouse in Bessemer, Alabama. Primary Coils arrive by rail or truck and off-loaded to warehouse or slitting queue.*



*Slitting operations in Bessemer cut primary coil into multiple coils for roll-forming.*



*Roll-forming operations produce steel framing products. Southline Steel operates 8 roll-form lines in Alabama and Florida.*



*Finished steel framing products are stacked into bunks and loaded onto trucks.*



*Floor and roof trusses are designed in Freeport, FL. Trusses are assembled at plant locations in Alabama and Florida. Shown is roof truss assembly table in Freeport, FL.*

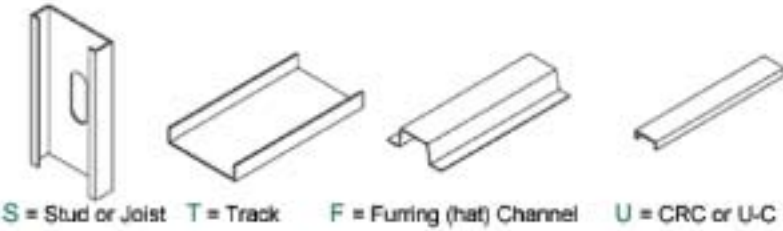
**Table of Contents**

Product General Information	3
Structural Stud	4
Stud Punch Patterns	7
Structural Track	8
Drywall Stud and Track	10
Hat Channel	11
Floor and Roof Truss Systems	12
Bracing Accessories	13
Connectors, Clips & Accessories	14
Summary	15

# Product General Information

When ordering, identify Steel Framing Products by their four-part identification.

For example, a 16 Gauge Stud with a 3 5/8" web, and 1 5/8" flange, has a product ID of 362S162-54.



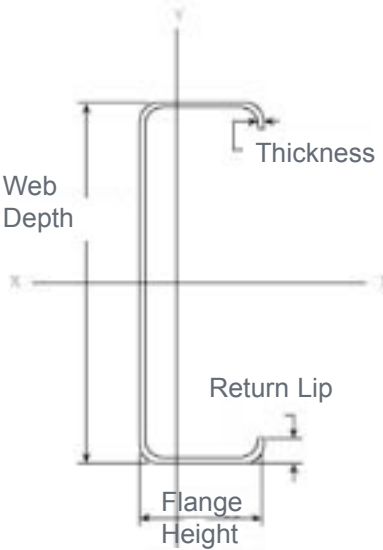
**362 | S | 162 | - 54**

Web Depth = 3 5/8 in

Stud

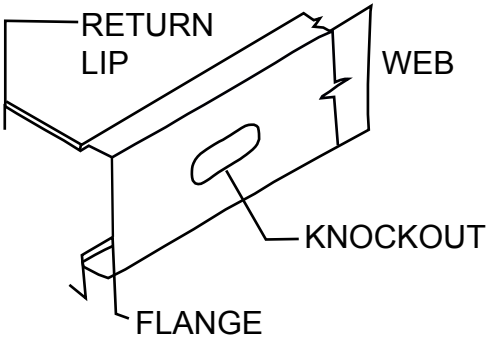
Flange = 1 5/8 in

Material Thickness = 54/1000 inches



## Product Identification

XXX	X	XXX	-	XX
Web Depth (in)	(S) tud (T) rack (F) urring (U) CRC	Flange (in)		Material Thickness (mil)

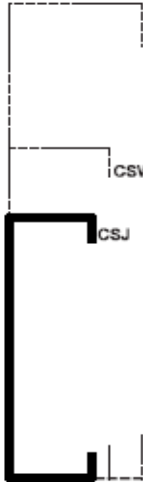


Note: All studs are delivered punched unless otherwise requested. Track and other items are not punched.

## Color Coding for Material Bunks

Mils	Gauge	Design Thick-ness	Minimum Thick-ness	Color
18	25	0.0188"	0.0179"	Black
30	DW20	0.0312"	0.0296"	Pink
33	20	0.0346"	0.0329"	White
43	18	0.0451"	0.0428"	Yellow
54	16	0.0566"	0.0538"	Green
68	14	0.0713"	0.0677"	Orange
97	12	0.1017"	0.0966"	Red

Use Southline Steel Structural Stud for load-bearing walls, tall interior walls, floor joists, as well as roof and floor truss assemblies.



**CSS** CSS studs have a 3" flange and a 5/8" return lip. They are used in structural applications where long spanning and heavy loading conditions are encountered.

**CSW** CSW studs have a 2" wide flange and a 5/8" return lip. The wider flange makes attachment of flooring and other sheathing materials easier, and provides additional surface area and greater strength. CSW is also used in axial load-bearing wall assemblies.

**CSJ** CSJ studs have a 1-5/8" flange and a 1/2" return lip. CSJ members are among the most widely adopted structural framing members in the industry. They provide excellent vertical strength in structural walls, and may also be used in light joist applications.



Structural C Stud

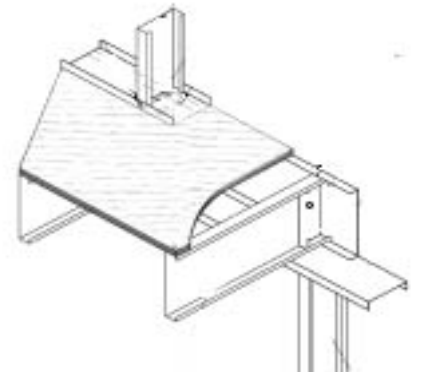
Structural Stud						
Name	Product ID	Mil	GA	Lip	lb/ft	Pieces per Pallet
2 1/2" x 1 5/8" Stud	250S162-33	0.033	20	1/2"	0.701	280
2 1/2" x 1 5/8" Stud	250S162-43	0.043	18	1/2"	0.914	280
2 1/2" x 1 5/8" Stud	250S162-54	0.054	16	1/2"	1.147	280
2 1/2" x 1 5/8" Stud	250S162-68	0.068	14	1/2"	1.445	280
2 1/2" x 1 5/8" Stud	250S162-97	0.097	12	1/2"	2.061	280
2 1/2" x 2" Stud	250S200-33	0.033	20	5/8"	0.785	280
2 1/2" x 2" Stud	250S200-43	0.043	18	5/8"	1.023	280
2 1/2" x 2" Stud	250S200-54	0.054	16	5/8"	1.285	280
2 1/2" x 2" Stud	250S200-68	0.068	14	5/8"	1.618	280
2 1/2" x 2" Stud	250S200-97	0.097	12	5/8"	2.308	280
3 5/8" x 1 5/8" Stud	362S162-33	0.033	20	1/2"	0.827	200
3 5/8" x 1 5/8" Stud	362S162-43	0.043	18	1/2"	1.078	200
3 5/8" x 1 5/8" Stud	362S162-54	0.054	16	1/2"	1.354	200
3 5/8" x 1 5/8" Stud	362S162-68	0.068	14	1/2"	1.705	200
3 5/8" x 1 5/8" Stud	362S162-97	0.097	12	1/2"	2.432	200
3 5/8" x 2" Stud	362S200-33	0.033	20	5/8"	0.912	200
3 5/8" x 2" Stud	362S200-43	0.043	18	5/8"	1.188	200
3 5/8" x 2" Stud	362S200-54	0.054	16	5/8"	1.492	200
3 5/8" x 2" Stud	362S200-68	0.068	14	5/8"	1.878	200
3 5/8" x 2" Stud	362S200-97	0.097	12	5/8"	2.679	200
4" x 1 5/8" Stud	400S162-33	0.033	20	1/2"	0.869	180
4" x 1 5/8" Stud	400S162-43	0.043	18	1/2"	1.133	180
4" x 1 5/8" Stud	400S162-54	0.054	16	1/2"	1.423	180
4" x 1 5/8" Stud	400S162-68	0.068	14	1/2"	1.792	180
4" x 1 5/8" Stud	400S162-97	0.097	12	1/2"	2.556	180
4" x 2" Stud	400S200-33	0.033	20	5/8"	0.954	180

Specify Length when Ordering



Load Bearing Wall braced with CRC and flat strap.

Structural Stud						
Name	Product ID	Mil	GA	Lip	lb/ft	Pieces per Pallet
4" x 2" Stud	400S200-43	0.043	18	5/8"	1.243	180
4" x 2" Stud	400S200-54	0.054	16	5/8"	1.560	180
4" x 2" Stud	400S200-68	0.068	14	5/8"	1.965	180
4" x 2" Stud	400S200-97	0.097	12	5/8"	2.803	180
6" x 1 5/8" Stud	600S162-33	0.033	20	1/2"	1.094	144
6" x 1 5/8" Stud	600S162-43	0.043	18	1/2"	1.425	144
6" x 1 5/8" Stud	600S162-54	0.054	16	1/2"	1.790	144
6" x 1 5/8" Stud	600S162-68	0.068	14	1/2"	2.254	144
6" x 1 5/8" Stud	600S162-97	0.097	12	1/2"	3.215	144
6" x 2" Stud	600S200-33	0.033	20	5/8"	1.178	96
6" x 2" Stud	600S200-43	0.043	18	5/8"	1.535	96
6" x 2" Stud	600S200-54	0.054	16	5/8"	1.928	96
6" x 2" Stud	600S200-68	0.068	14	5/8"	2.427	96
6" x 2" Stud	600S200-97	0.097	12	5/8"	3.462	96
6" x 3" Stud	600S300-43	0.043	18	5/8"	1.827	96
6" x 3" Stud	600S300-54	0.054	16	5/8"	2.295	96
6" x 3" Stud	600S300-68	0.068	14	5/8"	2.890	96
6" x 3" Stud	600S300-97	0.097	12	5/8"	4.122	96
8" x 1 5/8" Stud	800S162-33	0.033	20	1/2"	1.318	80
8" x 1 5/8" Stud	800S162-43	0.043	18	1/2"	1.718	80
8" x 1 5/8" Stud	800S162-54	0.054	16	1/2"	2.157	80
8" x 1 5/8" Stud	800S162-68	0.068	14	1/2"	2.716	80
8" x 1 5/8" Stud	800S162-97	0.097	12	1/2"	3.875	80
8" x 2" Stud	800S200-33	0.033	20	5/8"	1.402	80
8" x 2" Stud	800S200-43	0.043	18	5/8"	1.827	80
8" x 2" Stud	800S200-54	0.054	16	5/8"	2.295	80
8" x 2" Stud	800S200-68	0.068	14	5/8"	2.890	80
8" x 2" Stud	800S200-97	0.097	12	5/8"	4.122	80
8" x 3" Stud	800S300-43	0.043	18	5/8"	2.120	80
8" x 3" Stud	800S300-54	0.054	16	5/8"	2.662	80
8" x 3" Stud	800S300-68	0.068	14	5/8"	3.352	80
8" x 3" Stud	800S300-97	0.097	12	5/8"	4.782	80
10" x 1 5/8" Stud	1000S162-43	0.043	18	1/2"	2.010	64
10" x 1 5/8" Stud	1000S162-54	0.054	16	1/2"	2.524	64
10" x 1 5/8" Stud	1000S162-68	0.068	14	1/2"	3.179	64
10" x 1 5/8" Stud	1000S162-97	0.097	12	1/2"	4.534	64
10" x 2" Stud	1000S200-43	0.043	18	5/8"	2.120	64
10" x 2" Stud	1000S200-54	0.054	16	5/8"	2.662	64
10" x 2" Stud	1000S200-68	0.068	14	5/8"	3.352	64
10" x 2" Stud	1000S200-97	0.097	12	5/8"	4.782	64
10" x 3" Stud	1000S300-43	0.043	18	5/8"	2.412	64
10" x 3" Stud	1000S300-54	0.054	16	5/8"	3.029	64
Specify Length when Ordering						

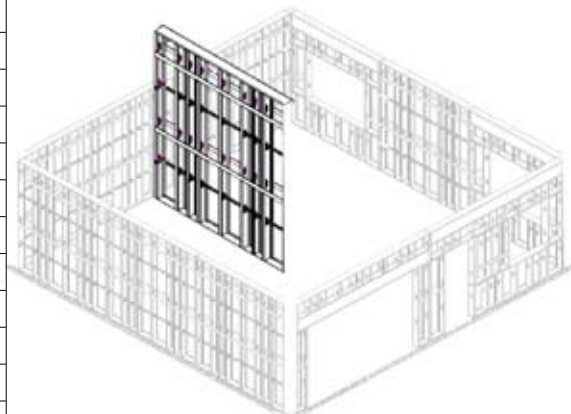


Structural Stud used as Floor Joist Application - 1.



Structural Stud used as Floor Joist Application - 2.

Extra High Interior Wall



Structural Stud						
Name	Product ID	Mil	GA	Lip	lb/ft	Pieces per Pallet
12" x 1 5/8" Stud	1200S162-68	0.068	14	1/2"	3.641	48
12" x 1 5/8" Stud	1200S162-97	0.097	12	1/2"	5.194	48
12" x 2" Stud	1200S200-43	0.043	18	5/8"	2.412	48
12" x 2" Stud	1200S200-54	0.054	16	5/8"	3.029	48
12" x 2" Stud	1200S200-68	0.068	14	5/8"	3.814	48
12" x 2" Stud	1200S200-97	0.097	12	5/8"	5.441	48
12" x 3" Stud	1200S300-43	0.043	18	5/8"	2.704	48
12" x 3" Stud	1200S300-54	0.054	16	5/8"	3.396	48
12" x 3" Stud	1200S300-68	0.068	14	5/8"	4.277	48
12" x 3" Stud	1200S300-97	0.097	12	5/8"	6.101	48

Specify Length when Ordering



Coil warehouse in Bessemer, Al. Coil crane and lift assembly shown in background.



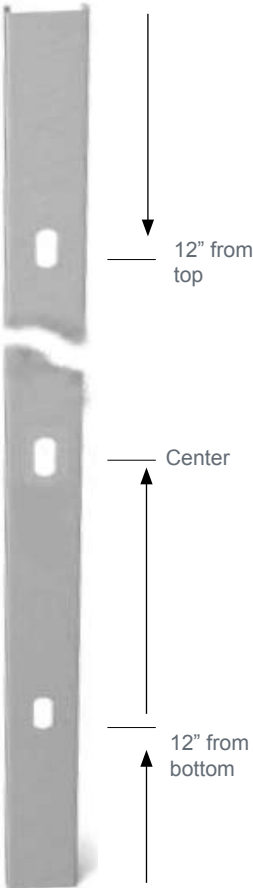
Above. Scissors roof truss system during installation.

Right. Univeristy of Alabama at Birmingham Women and Infants facility



Structural Stud is Oval-Punched to permit rapid installation of plumbing, electrical and wall bridging. When ordering, specify punch pattern, product identification, and length. Custom punch patterns (or no punches) are available.

Standard Punch Pattern



Standard oval knockout sizing is 1-1/2" x 4" in members 3-5/8" and wider. Items under 3-5/8" wide are un-punched unless otherwise specified. If desired, members can be punched with a 3/4" x 4" knockout. Knockouts are punched 12" from the lead edge with additional knockouts every 24" O.C.

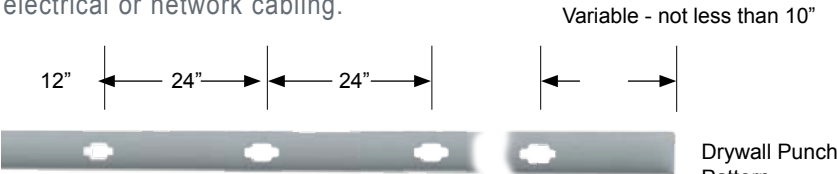


Electrical Installation on Structural Stud.



2 1/2" Wide Studs      3 5/8" and Wider Studs

Drywall Stud is Rectangular-Punched to permit rapid installation of plumbing, electrical or network cabling.



Leading Edge

Drywall Punch Pattern



Rectangular "Plus" Punch Pattern on Drywall Stud 3 5/8" Web and Wider      Rectangular Punch Pattern on Drywall Stud 2 1/2" and 1 5/8" Web

All drywall stud is shipped punched unless otherwise requested. 3 5/8" and wider stud are shipped with the rectangular "plus" punch as shown. 2 1/2" and 1 5/8" stud are shipped with a rectangular punch measuring 3/4" x 2".

Structural Track is used as the top and bottom enclosures for securing wall studs or ends to joist framing. It is also used in a variety of applications where structural members are needed.

Structural track is used as enclosures to structural studs/joists in load bearing walls and floors. Typically, structural track is ordered to match the size and gauge of structural wall studs.

Longer flange structural track is also used to correct pre-existing conditions such as deflected floors, and uneven ceilings and walls.

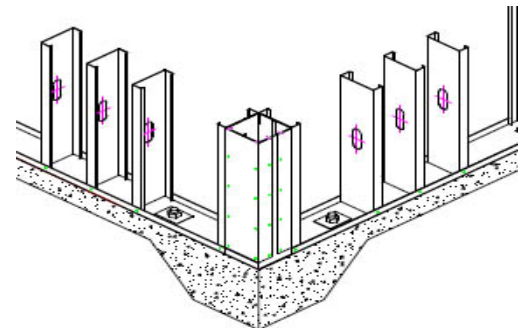


Structural Track

Structural Track				
Name	Product ID	Gauge	pcs/pallet	lb/ft
2 1/2" x 1 1/4" Track	250T125-33	20	84	0.547
2 1/2" x 1 1/4" Track	250T125-43	18	84	0.713
2 1/2" x 1 1/4" Track	250T125-54	16	84	0.895
2 1/2" x 1 1/4" Track	250T125-68	14	84	1.127
2 1/2" x 1 1/4" Track	250T125-97	12	84	1.608
2 1/2" x 2" Track	250T200-33	20	84	0.715
2 1/2" x 2" Track	250T200-43	18	84	0.932
2 1/2" x 2" Track	250T200-54	16	84	1.170
2 1/2" x 2" Track	250T200-68	14	84	1.474
2 1/2" x 2" Track	250T200-97	12	84	2.102
2 1/2" x 2 1/2" Track	250T250-33	20	84	0.827
2 1/2" x 2 1/2" Track	250T250-43	18	84	1.078
2 1/2" x 2 1/2" Track	250T250-54	16	84	1.354
2 1/2" x 2 1/2" Track	250T250-68	14	84	1.705
2 1/2" x 2 1/2" Track	250T250-97	12	84	2.432
3 5/8" x 1 1/4" Track	362T125-33	20	198	0.673
3 5/8" x 1 1/4" Track	362T125-43	18	198	0.877
3 5/8" x 1 1/4" Track	362T125-54	16	198	1.101
3 5/8" x 1 1/4" Track	362T125-68	14	198	1.387
3 5/8" x 1 1/4" Track	362T125-97	12	198	1.979
3 5/8" x 2" Track	362T200-33	20	100	0.841
3 5/8" x 2" Track	362T200-43	18	100	1.096
3 5/8" x 2" Track	362T200-54	16	100	1.377
3 5/8" x 2" Track	362T200-68	14	100	1.734
3 5/8" x 2" Track	362T200-97	12	100	2.473
3 5/8" x 2 1/2" Track	362T250-33	20	100	0.954
3 5/8" x 2 1/2" Track	362T250-43	18	100	1.243
3 5/8" x 2 1/2" Track	362T250-54	16	100	1.560
3 5/8" x 2 1/2" Track	362T250-68	14	100	1.965
3 5/8" x 2 1/2" Track	362T250-97	12	100	2.803
4" x 1 1/4" Track	400T125-33	20	200	0.715
4" x 1 1/4" Track	400T125-43	18	200	0.932
4" x 1 1/4" Track	400T125-54	16	200	1.170
Specify Length when ordering				



Structural Track used as Top and Sill Plate Enclosure for Wall Stud..



Structural Track in Wall - Secured to Slab.

Structural Track				
Name	Product ID	Gauge	pcs/pal-let	lb/ft
4" x 1 1/4" Track	400T125-68	14	200	1.474
4" x 1 1/4" Track	400T125-97	12	200	2.102
4" x 2" Track	400T200-33	20	96	0.883
4" x 2" Track	400T200-43	18	96	1.151
4" x 2" Track	400T200-54	16	96	1.446
4" x 2" Track	400T200-68	14	96	1.820
4" x 2" Track	400T200-97	12	96	2.597
4" x 2 1/2" Track	400T250-33	20	90	0.996
4" x 2 1/2" Track	400T250-43	18	90	1.297
4" x 2 1/2" Track	400T250-54	16	90	1.629
4" x 2 1/2" Track	400T250-68	14	90	2.052
4" x 2 1/2" Track	400T250-97	12	90	2.927
6" x 1 1/4" Track	600T125-33	20	192	0.940
6" x 1 1/4" Track	600T125-43	18	192	1.224
6" x 1 1/4" Track	600T125-54	16	192	1.537
6" x 1 1/4" Track	600T125-68	14	192	1.936
6" x 1 1/4" Track	600T125-97	12	192	2.762
6" x 2" Track	600T200-33	20	96	1.108
6" x 2" Track	600T200-43	18	96	1.444
6" x 2" Track	600T200-54	16	96	1.813
6" x 2" Track	600T200-68	14	96	2.283
6" x 2" Track	600T200-97	12	96	3.256
6" x 2 1/2" Track	600T250-33	20	96	1.220
6" x 2 1/2" Track	600T250-43	18	96	1.590
6" x 2 1/2" Track	600T250-54	16	96	1.996
6" x 2 1/2" Track	600T250-68	14	96	2.514
6" x 2 1/2" Track	600T250-97	12	96	3.586
8" x 1 1/4" Track	800T125-33	20	100	1.164
8" x 1 1/4" Track	800T125-43	18	100	1.517
8" x 1 1/4" Track	800T125-54	16	100	1.905
8" x 1 1/4" Track	800T125-68	14	100	2.398
8" x 1 1/4" Track	800T125-97	12	100	3.421
8" x 2" Track	800T200-33	20	100	1.332
8" x 2" Track	800T200-43	18	100	1.736
8" x 2" Track	800T200-54	16	100	2.180
8" x 2" Track	800T200-68	14	100	2.745
8" x 2" Track	800T200-97	12	100	3.916
8" x 2 1/2" Track	800T250-33	20	100	1.444
8" x 2 1/2" Track	800T250-43	18	100	1.882
8" x 2 1/2" Track	800T250-54	16	100	2.364
8" x 2 1/2" Track	800T250-68	14	100	2.976
8" x 2 1/2" Track	800T250-97	12	100	4.246
Specify Length when ordering				

Structural Track				
Name	Product ID	Gauge	pcs/pal-let	lb/ft
10" x 1 1/4" Track	1000T125-33	20	64	1.388
10" x 1 1/4" Track	1000T125-43	18	64	1.809
10" x 1 1/4" Track	1000T125-54	16	64	2.272
10" x 1 1/4" Track	1000T125-68	14	64	2.861
10" x 1 1/4" Track	1000T125-97	12	64	4.081
10" x 2" Track	1000T200-33	20	64	1.557
10" x 2" Track	1000T200-43	18	64	2.028
10" x 2" Track	1000T200-54	16	64	2.547
10" x 2" Track	1000T200-68	14	64	3.208
10" x 2" Track	1000T200-97	12	64	4.575
10" x 2 1/2" Track	1000T250-33	20	64	1.669
10" x 2 1/2" Track	1000T250-43	18	64	2.174
10" x 2 1/2" Track	1000T250-54	16	64	2.731
10" x 2 1/2" Track	1000T250-68	14	64	3.439
10" x 2 1/2" Track	1000T250-97	12	64	4.905
12" x 1 1/4" Track	1200T125-33	20	48	1.613
12" x 1 1/4" Track	1200T125-43	18	48	2.101
12" x 1 1/4" Track	1200T125-54	16	48	2.639
12" x 1 1/4" Track	1200T125-68	14	48	3.323
12" x 1 1/4" Track	1200T125-97	12	48	4.740
12" x 2" Track	1200T200-33	20	48	1.781
12" x 2" Track	1200T200-43	18	48	2.321
12" x 2" Track	1200T200-54	16	48	2.914
12" x 2" Track	1200T200-68	14	48	3.670
12" x 2" Track	1200T200-97	12	48	5.235
12" x 2 1/2" Track	1200T250-33	20	48	1.893
12" x 2 1/2" Track	1200T250-43	18	48	2.467
12" x 2 1/2" Track	1200T250-54	16	48	3.098
12" x 2 1/2" Track	1200T250-68	14	48	3.901
12" x 2 1/2" Track	1200T250-97	12	48	5.565
Specify Length when ordering				



Structural Track

Light Gauge Drywall Stud and Track products for interior wall framing.

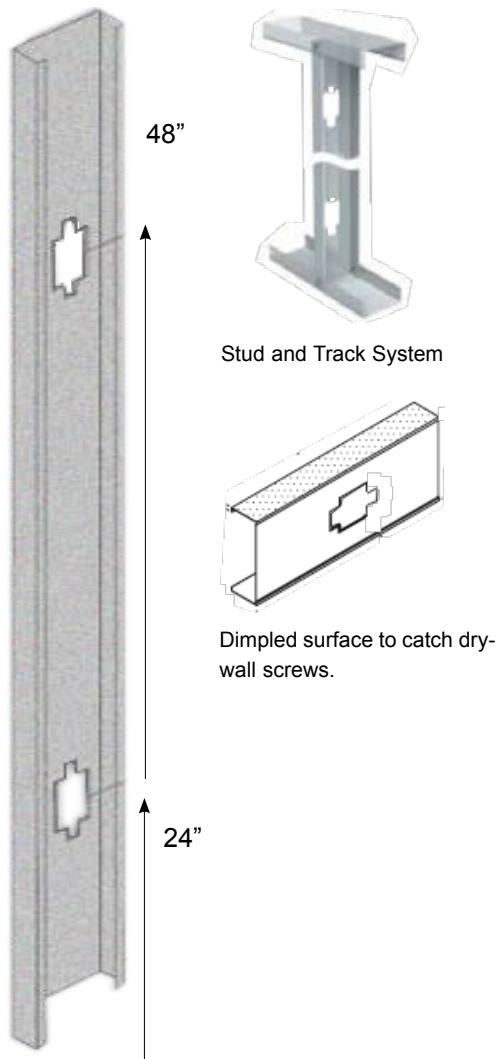
Southline Steel Drywall Stud and Track make interior and drywall framing fast and accurate.

When stick framing, attach track to the ceiling and directly below on the floor. Then insert pre-cut studs and twist into place. Stud and Track is then screwed into place with standard drywall screws. Refer to the Steel Framing Alliance procedure for additional details on framing interior walls (<http://www.steel framing.org/PDF/IssuePapers/InteriorWalls.pdf>).

Our pre-assembled interior wall panels are constructed in up to 16' lengths and to your height specifications.

Drywall Stud				
Name	Product ID	Gauge	lb/ft	pcs/pallet
1 5/8" x 1 1/4" Stud	162S125-18	25	0.268	420
1 5/8" x 1 1/4" Stud	162S125-30	20	0.446	420
2 1/2" x 1 1/4" Stud	250S125-18	25	0.321	480
2 1/2" x 1 1/4" Stud	250S125-30	20	0.535	480
3 5/8" x 1 1/4" Stud	362S125-18	25	0.390	360
3 5/8" x 1 1/4" Stud	362S125-30	20	0.650	360
4" x 1 1/4" Stud	400S125-18	25	0.413	360
4" x 1 1/4" Stud	400S125-30	20	0.688	360
6" x 1 1/4" Stud	600S125-18	25	0.535	180
6" x 1 1/4" Stud	600S125-30	20	0.892	180

Specify ID and Length when ordering  
 Pcs/pallet are based on lengths up to 12'



Drywall Track				
Name	Product ID	Gauge	lb/ft	pcs/pallet
1 5/8" x 1 1/4" Track	162T125-18	25	0.245	420
1 5/8" x 1 1/4" Track	162T125-30	20	0.408	420
2 1/2" x 1 1/4" Track	250T125-18	25	0.298	420
2 1/2" x 1 1/4" Track	250T125-30	20	0.497	420
3 5/8" x 1 1/4" Track	362T125-18	25	0.367	420
3 5/8" x 1 1/4" Track	362T125-30	20	0.612	420
4" x 1 1/4" Track	400T125-18	25	0.390	360
4" x 1 1/4" Track	400T125-30	20	0.650	360
6" x 1 1/4" Track	600T125-18	25	0.512	180
6" x 1 1/4" Track	600T125-30	20	0.854	180

Specify Product ID and Length when ordering  
 Pcs/pallet are based on lengths up to 12'

Limiting Heights Table (Composite)

Product ID	12" o.c			16" o.c			24" o.c		
	L/120	L/240	L/360	L/120	L/240	L/360	L/120	L/240	L/360
162S125-18	11' 2"	8' 10"	-	10' 7"	8' 4"	-	9' 9" f	7' 11"	-
162S125-30	12' 5"	9' 11"	-	11' 6"	9' 2"	-	10' 5"	8' 3"	-
250S125-18	15' 1"	11' 11"	10' 5"	13' 3" f	11' 3"	9' 10"	11' 10" f	10' 7"	9' 3"
250S125-30	16' 8"	13' 2"	11' 6"	15' 4"	12' 1"	10' 6"	13' 9"	10' 9"	9' 4"
362S125-18	17' 8" f	15' 4"	13' 3"	15' 4"	14' 4"	12' 4"	13' 9"	13' 5"	11' 7"
362S125-30	21' 8"	17' 1"	14' 10"	19' 11"	15' 8"	13' 7"	17' 9"	14' 0"	12' 0"
400S125-18	19' 6" f	16' 5"	14' 4"	17' 2" f	15' 4"	13' 4"	15' 1" f	14' 2"	12' 4"
400S125-30	24' 0"	19' 0"	16' 6"	22' 0"	17' 6"	15' 2"	19' 8"	15' 7"	13' 5"
600S125-18	22' 10"	22' 1"	19' 4"	19' 9" f	19' 9"	17' 11"	16' 9"	16' 9"	16' 9"

1. Composite wall sheathed on both sides full height with minimum 1/2" gypsum wallboard.  
 2. [f] Flexural Stress controls allowable wall height.

Easy to install Furring (Hat) Channel is used for furring roofs, ceilings, walls, masonry, and other surfaces where furring is required. Hat channel makes an excellent material for furring-out roofs for installation of modern roofing materials.

Furring channel is a hat-shaped galvanized product used in a variety of new construction and renovation applications. It is used to furr out walls, ceilings, and roofs, and is ideal as preparation for metal roofing on an existing asphalt roof.

Furring channel is also excellent for correcting pre-existing problems such as uneven ceilings and walls. Heavier-gauge furring enables greater spans and loading capacity.



1 1/2" Hat Channel



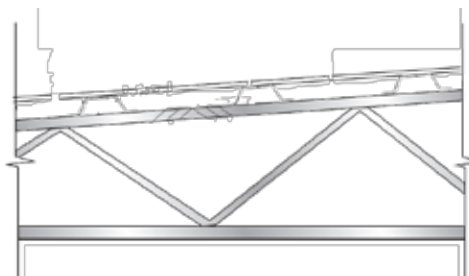
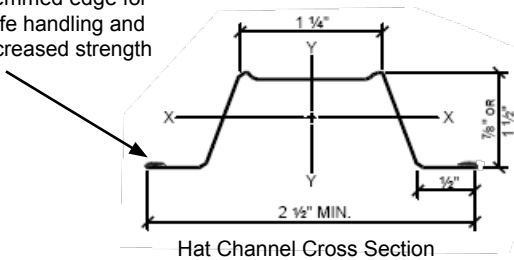
7/8" Hat Channel

- Wide knurled face prevents screw "ride" and facilitates easy installation.
- Use to level uneven surfaces.
- Available in 7/8" and 1-1/2" depths and 25, 20 and 18 gauge.
- Standard length is 12'. Other lengths available. Please specify when ordering.

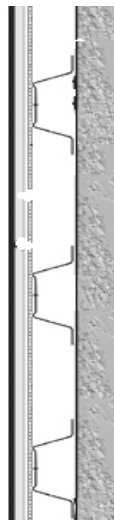
Product Code	Thickness		Size		Weight/ft		Packaging	
	Gauge	Mils	Inches	mm	lbs	kg	pcs/bundle	pcs/pallet
087F125-18	25	18	7/8	22.2	0.256	0.116	10	440
087F125-30	20	30	7/8	22.2	0.426	0.193	10	440
087F125-43	18	43	7/8	22.2	0.611	0.277	10	440
150F125-18	25	18	1-1/2	38.1	0.355	0.161	10	440
150F125-30	20	30	1-1/2	38.1	0.561	0.254	10	440
150F125-43	18	43	1-1/2	38.1	0.804	0.365	10	440

Specify Length when Ordering

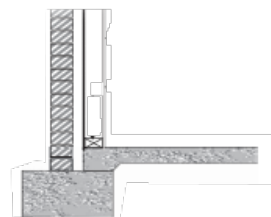
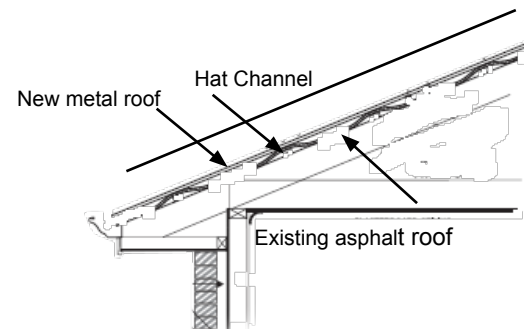
Hemmed edge for safe handling and increased strength



Hat Channel used to fur-out roof truss.



Hat Channel used to furr out concrete wall. Top view shown - members placed vertically

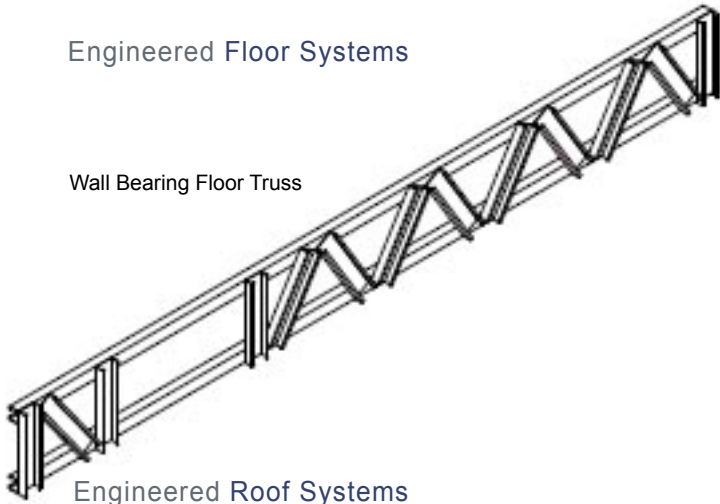


Hat Channel used for roof retrofit.

Southline Steel Trusses are available in many varieties. Each truss type is designed and custom built to meet the architectural and structural needs of your building.

**Engineered Floor Systems**

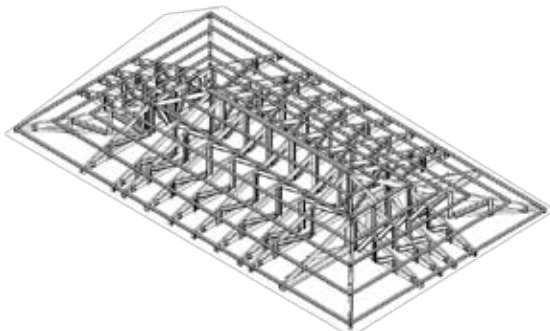
Wall Bearing Floor Truss



- Standard depths are 16" and 24".
- Manufactured from 50 ksi galvanized steel.
- Pre-compressed during assembly.
- Large 30" chase width for HVAC
- Manufactured to building specification.

**Engineered Roof Systems**

Southline Steel *specializes* in the design and manufacturing of engineered roof systems for the commercial, and residential building industries. From Attic to Vaulted roof trusses, Southline Steel can engineer and manufacture virtually any type of roof truss. Our state-of-the-art design, modeling, and assembly process ensures fast turnaround time.



**Inputs Required when specifying a roof system**

- Desired Truss Type - determines whether there will be storage or living space. Also defines architectural details such as soffit, overhang, and fascia heights.
- Location - determines the codes that apply.
- Building Category - determines the type of structure such as a hospital, school, residential, etc.
- Span Length - determined by the distance between bearing walls.
- Desired Pitch - influences many of design parameters and also has an impact on the overall truss weight.
- Plans - provides information on the wall and ceiling types, wall thicknesses, spans, etc.



**Howe**



**Gable End**



**PiggyBack**



**Attic**



**Cantilever**



**Scissors**



**Hip Stepdown**

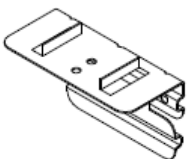


**Vaulted**

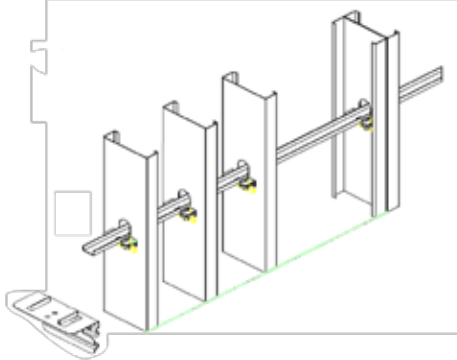
Bracing Accessories - (CRC) Cold Rolled Channel, BridgeClip<sup>®</sup>, and Flat Strap

(CRC) Cold-Rolled Channel and BridgeClip<sup>®</sup>

Cold-Rolled channel with BridgeClip<sup>®</sup> provides lateral support and increased torsional stability in wall assemblies.



BridgeClip<sup>®</sup>



CRC with BridgeClip<sup>®</sup>

Cold Rolled Channel

BridgeClip<sup>®</sup> is used to secure 1 1/2" Cold-Rolled Channel to studs.

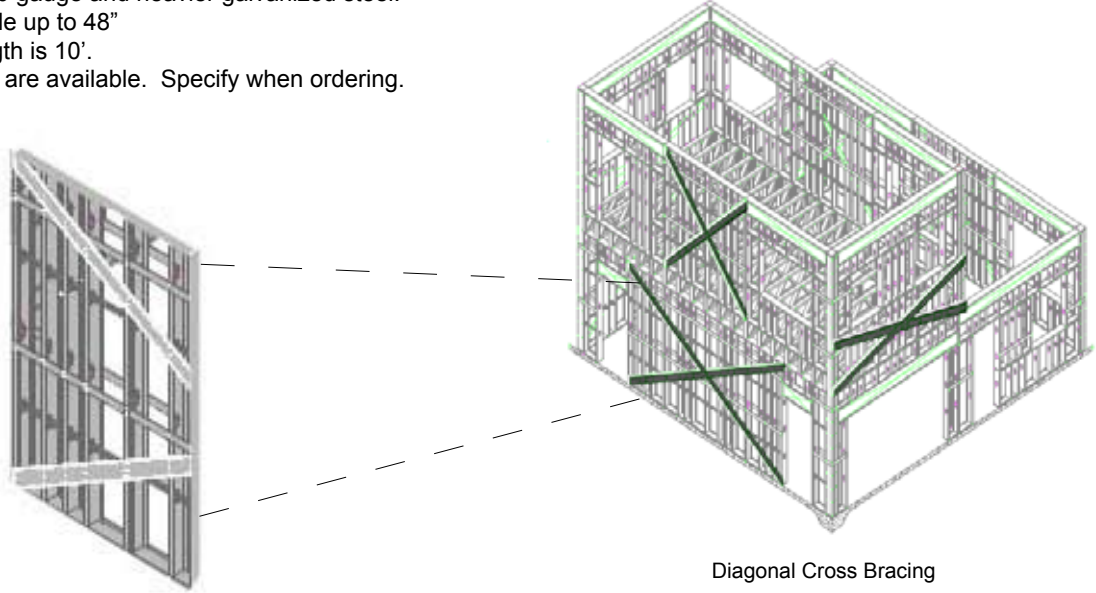
BridgeClip<sup>®</sup> is a registered trademark of the Steel Network.

Product ID	Thickness		Size	Weight	Packaging	
	Gauge	mils	Inches	lbs	pcs/ bundle	pcs/ pallet
075U50-54	16	54	3/4	0.250	10	240
150U50-54	16	54	1-1/2	0.420	10	240
200U50-54	16	54	2	0.505	10	240
250U50-54	16	54	2 1/2"	0.597	10	240
Standard length is 16'.						

Flat Strap

Used for diagonal cross bracing, Flat Strap provides additional strength for loads parallel to wall.

- Available in 20 gauge and heavier galvanized steel.
- Width available up to 48"
- Standard length is 10'.
- Other lengths are available. Specify when ordering.



Diagonal Cross Bracing

### Connectors, Clips and Accessories

#### Bent Plate Angle



- Used in a variety of applications for securing members in floors, walls, roofs, etc.
- Standard length is 10'.
- Available thicknesses are 20, 18, 16, 14 and 12 gauge.
- Variety of dimensions and angles are available upon request.

#### Other Accessories

- Connectors and Clips for securing roof trusses and walls to structure.
- Wide variety of washers for increasing pull-out strength where screws and/or bolts are used.
- Flat steel panels cut to a variety of sizes and shapes and available in several gauges.



Structural Line, Bessemer, AL



Coil slitting queue, Bessemer, AL. 42-ton crane in background.



Loading zone, Freeport, FL. Lift crane for loading trusses and framing products directly to trucks.

Summary



With plant locations in Alabama and Florida, Southline Steel Industries operates over 195,000 square feet of steel processing operations. We buy our steel *directly* from the mill, and have among the most streamlined coil slitting and roll-forming operations in the industry.

At Southline Steel Industries, we make it our business to get to know you and your business. Discover the Southline Steel Advantage. Contact a Sales Representative today.

Photos

Top. Model home located at plant location in Freeport, FL

Middle. Structural Stud Line, Freeport, FL

Bottom. Drywall Line, Bessemer, AL



## Southline Steel Locations and Contact Information

9984 Highway 20 West  
Freeport, FL 32439

2625 5th Avenue North  
Bessemer, AL 35020

(850) 835-0301 (Phone)  
(850) 835-0309 (Fax)

(205) 424-5335 (Phone)  
(205) 424-9926 (Fax)

[www.southlinesteel.com](http://www.southlinesteel.com)  
[sales@southlinesteel.com](mailto:sales@southlinesteel.com)